



Prefabricated Buildings

The company 'Albero Maestro' was established 15 years ago, and from the beginning has dealt in structures in wood, such as houses and roofs.

Over the years, the company has increasingly directed its attention towards the engineering and in-house laboratory production of prefabricated elements, with the aim of lowering production costs, and in particular assembly costs.

Recently, an innovative construction system has been developed based on the prefabrication of walls, floors and roofs in modules. These modules are designed and engineered to be assembled on site, according to a predetermined scheme, and this makes the realization of a building extremely easy and rapid.

For each individual project, the production process takes into account the architectural requirements, the local culture and landscape, the climate, the humidity levels, and the temperature range of the site of construction. Although production is realized with modules in series, this system does not preclude the possibility of creating at the project stage an architecturally new building according to the needs of the client.

Thanks to the flexibility of its product, Albero Maestro embarked on a project in recent years to broaden its customer base by opening to foreign markets. The project has taken account of the dimensioning of the modules on the basis of the size of the containers, thus optimizing the space and containing transport costs.

For example, for a building of 50-55mq all the modules of the internal-external walls, the roof modules, and all the auxiliary elements such as window frames and finishing components, can fit into a 20-foot container.

Once the container arrives at the construction site, the modules can be unloaded by four men if there is no crane available. Thanks to its extreme simplicity, installation requires the presence of only one expert operator, who can coordinate local labor to follow the assembly diagrams.



Brise Soleil

In parallel to this, Albero Maestro has felt the need to give a unique and unmistakable character to its prefabricated buildings. It has therefore developed a business unit which deals with the production of wood and metal shading systems: the " brise soleil ". This is a high range product which is having a great success. In a short time, it has come to be a requirement for buildings of all types, both new and old. In this case too, the strength of Albero Maestro is in the continuous search for a customized solution, designed and adapted for each specific building.

Thanks to its big success, with shipments all over Italy, the company has quickly begun to export the shading systems abroad, especially to North Africa. The last major contract of this type was the provision of a brise soleil sliding system for a villa in Algeria. This particular brise soleil, with a stainless steel frame and teak slats, was motorized with a home automation system.

Albero Maestro has an internal technical studio, a workshop-warehouse and teams to carry out installations also in foreign countries.

Sun-breakers represent one of the most popular and advanced style choices on the contemporary architectural scene. Early models date back to more than a century ago, when Le Corbusier inserted them systematically in his buildings and the brise soleils are still high-demand items thanks their particular features. In fact, the sun-breakers are a safe and environmentally friendly solution against the damage caused by excessive solar radiation.

The brise soleil produced and proposed by Albero Maestro is flexible and is easily adapted to various types of building. It can communicate well with all architectural styles, it is applicable inside and outside and it can be used for cladding, railings, banisters, fences, gates, pergolas, ventilated walls and to delimit open spaces. By investing in research, the company has been able to obtain a "shading" which is durable in time, since the locking of the slats takes place through interlocking, without the use of screws or bolts, which are usually the main cause of the splitting of wood and often the main cause of the deterioration process. This solution has meant that the company has been possible to create a winning combination of two materials: wood and metal. The slats are made of the most durable types of wood and the metal used for the structure is hot galvanized and painted steel, stainless steel 316 satin or glossy, aluminum and Cor-ten.



The choice of wood is made depending on the length of the slats, on their section, their exposure to sunlight and weathering, and more generally on the climatic conditions to which they are exposed.

Another factor that determines the choice of one wood rather than another is undoubtedly the color rendering. Thanks to a range of wood types of different shades and also to the possibility of changing the dimension and distance between one slat and the next one, it is possible to obtain the most suitable texture for any architectural project.

The study of the mounting system has made it possible to facilitate installation and reduce the time for assembly.

The wooden brise soleil can also be supplied in a pre-assembled kit, which includes drawings and instructions to allow ease of assembly, also for not particularly skilled workers.

Moreover, Albero Maestro has a team of experienced installers available for transfers to all countries to satisfy all specific needs and requirements.

There are three main types of brise soleil.

The most common are the ones with fixed slats. With these it is possible to determine the most suitable inclination of the slats for each project. In this way it is possible to adjust the amount of solar radiation and obtain the desired degree of shading, and also increase privacy.

Another type is the sliding sunshade with Teflon and stainless steel carriers, which are often installed on terraces, balconies or outdoors. Albero Maestro has a patented motorized system for the automated displacement of the brise soleil which can be inserted into a home automation system.

Also available are adjustable sunscreens with an innovative mechanism for adjusting the inclination of the slats, available with a manual system and also a motorized one.

Albero Maestro offers to assist the client in the process of conception and design, advising and collaborating in the drafting of the project. The company is able to meet all possible requirements, having set out to design a product that is as flexible as possible, adaptable and modular, and designed each time to the individual specifications of the client.

Each shading product, after careful study and design, is realized through the collaboration of the company's engineers with the architectural firm developing the customized product.

Further applications are available. In fact, the company is open to developing projects in different contexts, for example, for events and exhibitions, for especially spectacular and impacting pavilions and stands, always with a continuous service in the construction and design phases.



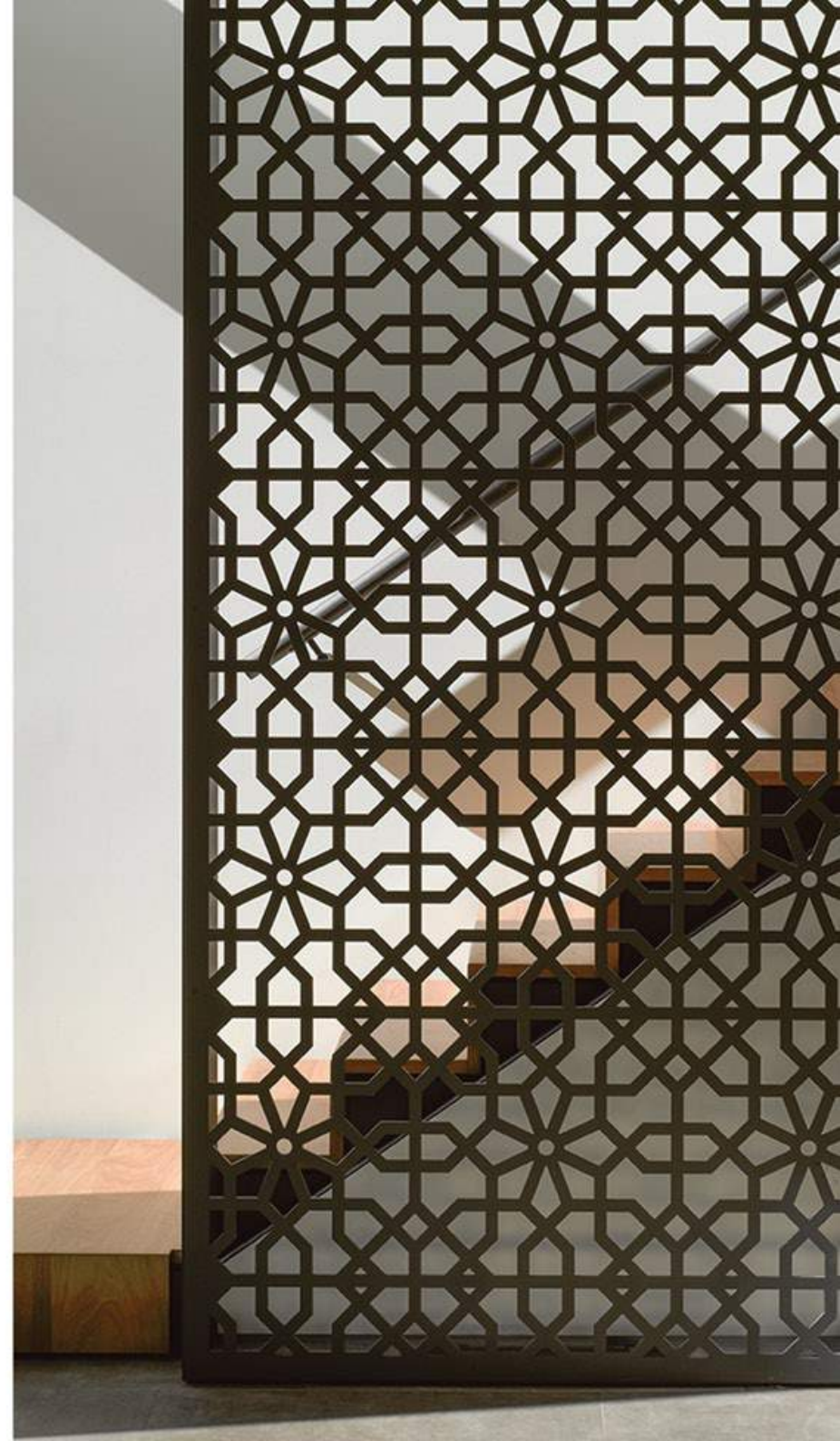
Mashrabiya

The beginning of relations with foreign countries, especially North African countries, has led the company to an interest in the traditional architecture of Arab countries. One such feature is the mashrabiya, a natural forced ventilation device, immediately striking the eyes of those who see it thanks to its inlaid geometrical design.

These elements are not only aesthetic but, historically, serve to protect the privacy of those inside the buildings. The main function, however, is to refrigerate the interior environment thanks to the reduction of the free area produced by the grid, which allows the acceleration of the passage of the wind. The effect is very often accompanied by contact with humid surfaces such as basins or water-filled plates, which diffuses a sense of freshness inside the house.

Today, thanks to new technologies, this custom is outdated, but the charm of the mashrabiya remains unchanged over time and therefore Albero Maestro has decided to revive these complex decorations in a modern way.

The company produces mashrabiya both for interiors and exteriors of buildings. Also in this case, Albero Maestro's technical team is available to assist the client through all stages of the project and to create, with millimetric precision, a tailor-made structure with a pattern of any shape and type.





Albero Maestro

HANDMADE IN ITALY

www.brissoleil.it
alberomaestro@brisseil.it



Tel: +39 0541- 943666
via E. Bevilacqua, 27 Savignano sul R. (FC)